

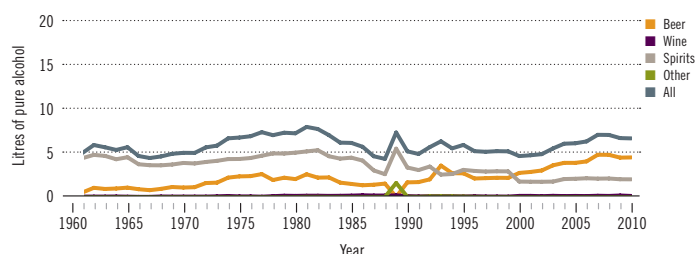
Belize

Total population: 309 000 ► Population aged 15 years and older (15+): 65% ► Population in urban areas: 52% ► Income group (World Bank): Lower middle income

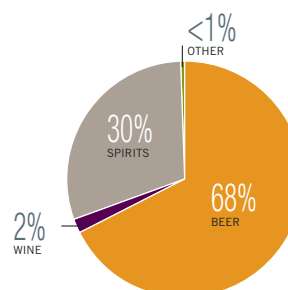
ALCOHOL CONSUMPTION: LEVELS AND PATTERNS

Recorded alcohol per capita (15+) consumption, 1961–2010

Data refer to litres of pure alcohol per capita (15+).



Recorded alcohol per capita (15+) consumption (in litres of pure alcohol) by type of alcoholic beverage, 2010



Alcohol per capita (15+) consumption (in litres of pure alcohol)

	Average 2003–2005	Average 2008–2010	Change
Recorded	5.3 ¹	6.8	↗
Unrecorded	1.0	1.7	↗
Total	6.3	8.5	↗
Total males / females		14.5 / 2.5	
WHO Region of the Americas	9.2	8.4	

¹ Tourist consumption deducted when at least as many tourists as inhabitants.

Prevalence of heavy episodic drinking* (%), 2010

	Population	Drinkers only
Males (15+)	4.6	10.2
Females (15+)	0.1	1.1
Both sexes (15+)	2.4	8.3

* Consumed at least 60 grams or more of pure alcohol on at least one occasion in the past 30 days.

Total alcohol per capita (15+) consumption, drinkers only (in litres of pure alcohol), 2010

Males (15+)	32.1
Females (15+)	21.2
Both sexes (15+)	29.8

Abstainers (%), 2010

	Males	Females	Both sexes
Lifetime abstainers (15+)	41.0	81.3	61.3
Former drinkers* (15+)	13.6	6.8	10.2
Abstainers (15+), past 12 months	54.6	88.0	71.4

* Persons who used to drink alcoholic beverages but have not done so in the past 12 months.

Patterns of drinking score, 2010

LEAST RISKY < 1 2 3 4 5 > MOST RISKY

HEALTH CONSEQUENCES: MORTALITY AND MORBIDITY

Age-standardized death rates (ASDR) and alcohol-attributable fractions (AAF), 2012

	ASDR*		AAF (%)	
	49.1	13.8	58.8	27.2
Liver cirrhosis, males / females	41.1	5.0	21.4	3.6
Road traffic accidents, males / females				

* Per 100 000 population (15+).

Years of life lost (YLL) score*, 2012

LEAST < 1 2 3 4 5 > MOST

* Based on alcohol-attributable years of life lost.

Prevalence of alcohol use disorders and alcohol dependence (%), 2010*

	Alcohol use disorders**	Alcohol dependence
Males	10.3	5.2
Females	2.0	1.0
Both sexes	6.1	3.1
WHO Region of the Americas	6.0	3.4

* 12-month prevalence estimates (15+).

** Including alcohol dependence and harmful use of alcohol.

POLICIES AND INTERVENTIONS

Written national policy (adopted/revised) / National action plan	No / —	National maximum legal blood alcohol concentration (BAC) when driving a vehicle (general / young / professional), in %	0.08 / 0.08 / 0.08
Excise tax on beer / wine / spirits	No / No / No	Legally binding regulations on alcohol advertising / product placement	No / No
National legal minimum age for off-premise sales of alcoholic beverages (beer / wine / spirits)	18 / 18 / 18	Legally binding regulations on alcohol sponsorship / sales promotion	No / No
National legal minimum age for on-premise sales of alcoholic beverages (beer / wine / spirits)	18 / 18 / 18	Legally required health warning labels on alcohol advertisements / containers	No / No
Restrictions for on-/off-premise sales of alcoholic beverages:		National government support for community action	Yes
Hours, days / places, density	Yes, No / Yes, No	National monitoring system(s)	No
Specific events / intoxicated persons / petrol stations	No / No / No		