

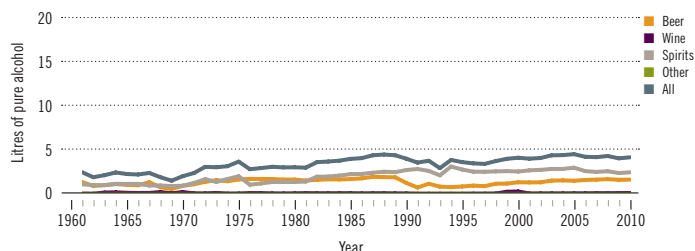
# Cuba

Total population: 11 282 000 > Population aged 15 years and older (15+): 83% > Population in urban areas: 75% > Income group (World Bank): Upper middle income

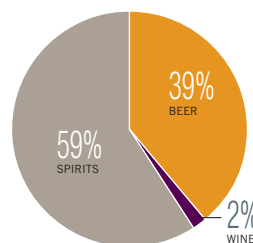
## ALCOHOL CONSUMPTION: LEVELS AND PATTERNS

### Recorded alcohol per capita (15+) consumption, 1961–2010

Data refer to litres of pure alcohol per capita (15+).



### Recorded alcohol per capita (15+) consumption (in litres of pure alcohol) by type of alcoholic beverage, 2010



### Alcohol per capita (15+) consumption (in litres of pure alcohol)

	Average 2003–2005	Average 2008–2010	Change
Recorded	4.4	4.2	→
Unrecorded	1.1	1.0	→
<b>Total</b>	<b>5.5</b>	<b>5.2</b>	<b>→</b>
Total males / females		8.8 / 1.6	
WHO Region of the Americas	9.2	8.4	

### Total alcohol per capita (15+) consumption, drinkers only (in litres of pure alcohol), 2010

Males (15+)	12.3
Females (15+)	3.0
Both sexes (15+)	8.3

### Abstainers (%), 2010

	Males	Females	Both sexes
Lifetime abstainers (15+)	9.6	25.3	17.4
Former drinkers* (15+)	18.6	22.0	20.3
Abstainers (15+), past 12 months	28.3	47.3	37.8

\*Persons who used to drink alcoholic beverages but have not done so in the past 12 months.

### Prevalence of heavy episodic drinking\* (%), 2010

	Population	Drinkers only
Males (15+)	10.9	15.2
Females (15+)	1.8	3.3
Both sexes (15+)	6.3	10.1

\*Consumed at least 60 grams or more of pure alcohol on at least one occasion in the past 30 days.

### Patterns of drinking score, 2010

LEAST RISKY < 1 2 3 4 5 > MOST RISKY

## HEALTH CONSEQUENCES: MORTALITY AND MORBIDITY

### Age-standardized death rates (ASDR) and alcohol-attributable fractions (AAF), 2012

	ASDR*		AAF (%)	
Liver cirrhosis, males / females	14.8	4.2	50.4	44.2
Road traffic accidents, males / females	12.6	3.3	5.2	0.9

\*Per 100 000 population (15+).

### Prevalence of alcohol use disorders and alcohol dependence (%), 2010\*

	Alcohol use disorders**	Alcohol dependence
Males	7.9	3.8
Females	3.1	1.7
Both sexes	5.5	2.8
WHO Region of the Americas	6.0	3.4

\*12-month prevalence estimates (15+).

\*\*Including alcohol dependence and harmful use of alcohol.

### Years of life lost (YLL) score\*, 2012

LEAST < 1 2 3 4 5 > MOST

\*Based on alcohol-attributable years of life lost.

## POLICIES AND INTERVENTIONS

Written national policy (adopted/revised) / National action plan	Yes (1985/2011) / Yes
Excise tax on beer / wine / spirits	— / — / —
National legal minimum age for off-premise sales of alcoholic beverages (beer / wine / spirits)	18 / 18 / 18
National legal minimum age for on-premise sales of alcoholic beverages (beer / wine / spirits)	18 / 18 / 18
Restrictions on on-/off-premise sales of alcoholic beverages: Hours, days / places, density Specific events / intoxicated persons / petrol stations	Yes, Yes / Yes, Yes Yes / Yes / Yes

National maximum legal blood alcohol concentration (BAC) when driving a vehicle (general / young / professional), in %	0.05 / 0.00 / 0.00
Legally binding regulations on alcohol advertising / product placement	Yes / Yes
Legally binding regulations on alcohol sponsorship / sales promotion	Yes / Yes
Legally required health warning labels on alcohol advertisements / containers	No / No
National government support for community action	Yes
National monitoring system(s)	Yes