

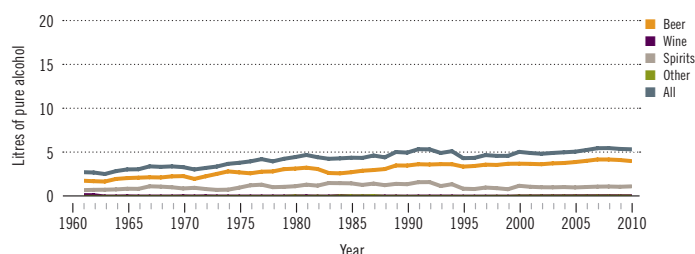
Mexico

Total population: 118 000 000 > Population aged 15 years and older (15+): 70% > Population in urban areas: 78% > Income group (World Bank): Upper middle income

ALCOHOL CONSUMPTION: LEVELS AND PATTERNS

Recorded alcohol per capita (15+) consumption, 1961–2010

Data refer to litres of pure alcohol per capita (15+).



Alcohol per capita (15+) consumption (in litres of pure alcohol)

	Average 2003–2005	Average 2008–2010	Change
Recorded	5.1	5.5	→
Unrecorded	3.4	1.8	↘
Total	8.5	7.2	↘
Total males / females		12.4 / 2.6	
WHO Region of the Americas	9.2	8.4	

Prevalence of heavy episodic drinking* (%), 2010

	Population	Drinkers only
Males (15+)	19.7	28.5
Females (15+)	5.3	11.4
Both sexes (15+)	12.1	21.2

*Consumed at least 60 grams or more of pure alcohol on at least one occasion in the past 30 days.

HEALTH CONSEQUENCES: MORTALITY AND MORBIDITY

Age-standardized death rates (ASDR) and alcohol-attributable fractions (AAF), 2012

	ASDR*		AAF (%)	
	54.7	16.6	65.5	51.6
Liver cirrhosis, males / females	26.7	6.5	45.2	9.5
Road traffic accidents, males / females				

*Per 100 000 population (15+).

Years of life lost (YLL) score*, 2012

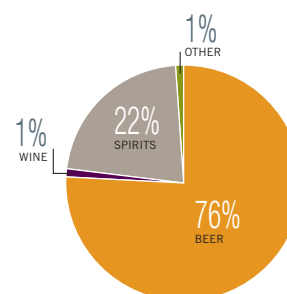
LEAST < 1 2 3 4 **5** > MOST

*Based on alcohol-attributable years of life lost.

POLICIES AND INTERVENTIONS

Written national policy (adopted/revised) / National action plan	Yes (1984/2011) / Yes
Excise tax on beer / wine / spirits	Yes / Yes / Yes
National legal minimum age for off-premise sales of alcoholic beverages (beer / wine / spirits)	18 / 18 / 18
National legal minimum age for on-premise sales of alcoholic beverages (beer / wine / spirits)	18 / 18 / 18
Restrictions for on-/off-premise sales of alcoholic beverages: Hours, days / places, density Specific events / intoxicated persons / petrol stations	Yes, No / Yes, Yes Yes / Yes / No

Recorded alcohol per capita (15+) consumption (in litres of pure alcohol) by type of alcoholic beverage, 2010



Total alcohol per capita (15+) consumption, drinkers only (in litres of pure alcohol), 2010

Males (15+)	18.0
Females (15+)	5.7
Both sexes (15+)	12.7

Abstainers (%), 2010

	Males	Females	Both sexes
Lifetime abstainers (15+)	12.8	31.3	22.6
Former drinkers* (15+)	18.3	22.4	20.5
Abstainers (15+), past 12 months	31.1	53.7	43.1

*Persons who used to drink alcoholic beverages but have not done so in the past 12 months.

Patterns of drinking score, 2010

LEAST RISKY < 1 2 **3** 4 5 > MOST RISKY

Prevalence of alcohol use disorders and alcohol dependence (%), 2010*

	Alcohol use disorders**	Alcohol dependence
Males	5.2	2.4
Females	0.5	0.3
Both sexes	2.7	1.3
WHO Region of the Americas	6.0	3.4

*12-month prevalence estimates (15+).

**Including alcohol dependence and harmful use of alcohol.