

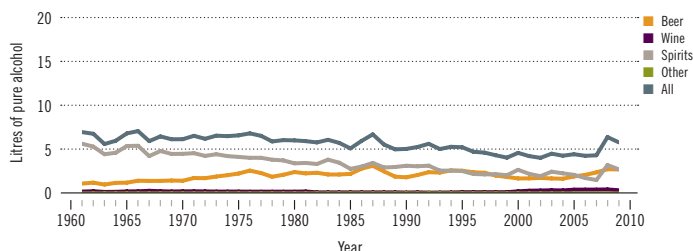
Peru

Total population: 29 263 000 ➤ Population aged 15 years and older (15+): 70% ➤ Population in urban areas: 77% ➤ Income group (World Bank): Upper middle income

ALCOHOL CONSUMPTION: LEVELS AND PATTERNS

Recorded alcohol per capita (15+) consumption, 1961–2010

Data refer to litres of pure alcohol per capita (15+).



Alcohol per capita (15+) consumption (in litres of pure alcohol)

	Average 2003–2005	Average 2008–2010	Change
Recorded	4.4	6.1	↗
Unrecorded	4.0	2.0	↘
Total	8.4	8.1	→
Total males / females		12.4 / 3.8	
WHO Region of the Americas	9.2	8.4	

Prevalence of heavy episodic drinking* (%), 2010

	Population	Drinkers only
Males (15+)	23.6	35.3
Females (15+)	3.6	8.1
Both sexes (15+)	13.5	24.5

*Consumed at least 60 grams or more of pure alcohol on at least one occasion in the past 30 days.

HEALTH CONSEQUENCES: MORTALITY AND MORBIDITY

Age-standardized death rates (ASDR) and alcohol-attributable fractions (AAF), 2012

	ASDR*		AAF (%)	
Liver cirrhosis, males / females	35.2	17.7	57.0	61.0
Road traffic accidents, males / females	29.7	13.5	21.5	6.0

*Per 100 000 population (15+).

Years of life lost (YLL) score*, 2012

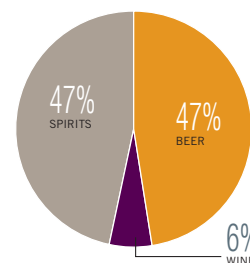
LEAST < 1 2 3 4 **5** > MOST

*Based on alcohol-attributable years of life lost.

POLICIES AND INTERVENTIONS

Written national policy (adopted/revised) / National action plan	No / —
Excise tax on beer / wine / spirits	Yes / No / No
National legal minimum age for off-premise sales of alcoholic beverages (beer / wine / spirits)	18 / 18 / 18
National legal minimum age for on-premise sales of alcoholic beverages (beer / wine / spirits)	18 / 18 / 18
Restrictions for on-/off-premise sales of alcoholic beverages:	
Hours, days / places, density	Yes, Yes / Yes, Yes
Specific events / intoxicated persons / petrol stations	Yes / No / No

Recorded alcohol per capita (15+) consumption (in litres of pure alcohol) by type of alcoholic beverage, 2010



Total alcohol per capita (15+) consumption, drinkers only (in litres of pure alcohol), 2010

Males (15+)	18.6
Females (15+)	8.6
Both sexes (15+)	14.6

Abstainers (%), 2010

	Males	Females	Both sexes
Lifetime abstainers (15+)	14.8	35.3	25.1
Former drinkers* (15+)	18.3	20.7	19.5
Abstainers (15+), past 12 months	33.1	56.0	44.6

*Persons who used to drink alcoholic beverages but have not done so in the past 12 months.

Patterns of drinking score, 2010

LEAST RISKY < 1 2 **3** 4 5 > MOST RISKY

Prevalence of alcohol use disorders and alcohol dependence (%), 2010*

	Alcohol use disorders**	Alcohol dependence
Males	12.2	7.9
Females	3.3	1.9
Both sexes	7.7	4.9
WHO Region of the Americas	6.0	3.4

*12-month prevalence estimates (15+).

**Including alcohol dependence and harmful use of alcohol.