

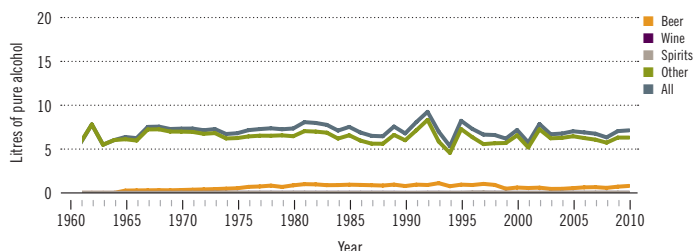
Rwanda

Total population: 10 837 000 ➤ Population aged 15 years and older (15+): 55% ➤ Population in urban areas: 19% ➤ Income group (World Bank): Low income

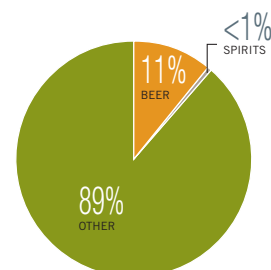
ALCOHOL CONSUMPTION: LEVELS AND PATTERNS

Recorded alcohol per capita (15+) consumption, 1961–2010

Data refer to litres of pure alcohol per capita (15+).



Recorded alcohol per capita (15+) consumption (in litres of pure alcohol) by type of alcoholic beverage, 2010



Alcohol per capita (15+) consumption (in litres of pure alcohol)

	Average 2003–2005	Average 2008–2010	Change
Recorded	6.8	6.8	➔
Unrecorded	3.0	3.0	➔
Total	9.8	9.8	➔
Total males / females		15.1 5.0	
WHO African Region	6.2	6.0	

Total alcohol per capita (15+) consumption, drinkers only (in litres of pure alcohol), 2010

Males (15+)	27.2
Females (15+)	14.3
Both sexes (15+)	22.0

Prevalence of heavy episodic drinking* (%), 2010

	Population	Drinkers only
Males (15+)	30.2	54.3
Females (15+)	10.9	31.2
Both sexes (15+)	20.1	45.0

*Consumed at least 60 grams or more of pure alcohol on at least one occasion in the past 30 days.

Abstainers (%), 2010

	Males	Females	Both sexes
Lifetime abstainers (15+)	28.7	55.8	42.8
Former drinkers* (15+)	15.8	9.4	12.4
Abstainers (15+), past 12 months	44.5	65.2	55.3

*Persons who used to drink alcoholic beverages but have not done so in the past 12 months.

Patterns of drinking score, 2010

LEAST RISKY < 1 2 3 4 5 > MOST RISKY

HEALTH CONSEQUENCES: MORTALITY AND MORBIDITY

Age-standardized death rates (ASDR) and alcohol-attributable fractions (AAF), 2012

	ASDR*		AAF (%)	
	28.5	19.0	74.3	69.4
Liver cirrhosis, males / females				
Road traffic accidents, males / females	39.5	17.4	30.3	10.3

*Per 100 000 population (15+).

Years of life lost (YLL) score*, 2012

LEAST < 1 2 3 4 5 > MOST

*Based on alcohol-attributable years of life lost.

Prevalence of alcohol use disorders and alcohol dependence (%), 2010*

	Alcohol use disorders**	Alcohol dependence
Males	9.9	4.2
Females	2.0	1.0
Both sexes	5.8	2.5
WHO African Region	3.3	1.4

*12-month prevalence estimates (15+).

**Including alcohol dependence and harmful use of alcohol.

POLICIES AND INTERVENTIONS

Written national policy (adopted/revised) / National action plan	No / —	National maximum legal blood alcohol concentration (BAC) when driving a vehicle (general / young / professional), in %	0.08 / 0.08 / 0.08
Excise tax on beer / wine / spirits	Yes / Yes / Yes	Legally binding regulations on alcohol advertising / product placement	No / No
National legal minimum age for off-premise sales of alcoholic beverages (beer / wine / spirits)	No / No / No	Legally binding regulations on alcohol sponsorship / sales promotion	No / No
National legal minimum age for on-premise sales of alcoholic beverages (beer / wine / spirits)	18 / 18 / 18	Legally required health warning labels on alcohol advertisements / containers	No / No
Restrictions for on-/off-premise sales of alcoholic beverages: Hours, days / places, density	Yes, No / Yes, No	National government support for community action	No
Specific events / intoxicated persons / petrol stations	No / No / Yes	National monitoring system(s)	No