

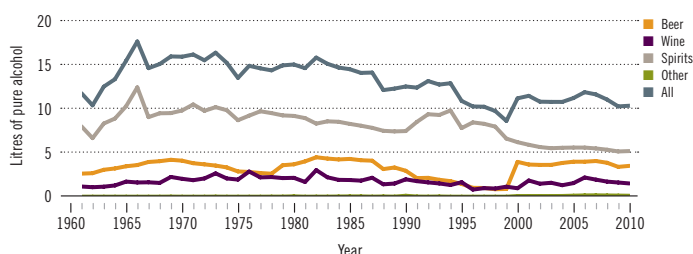
Bahamas

Total population: 360 000 ▶ Population aged 15 years and older (15+): 78% ▶ Population in urban areas: 84% ▶ Income group (World Bank): High income

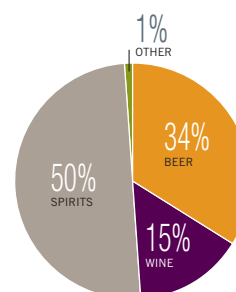
ALCOHOL CONSUMPTION: LEVELS AND PATTERNS

Recorded alcohol per capita (15+) consumption, 1961–2010

Data refer to litres of pure alcohol per capita (15+).



Recorded alcohol per capita (15+) consumption (in litres of pure alcohol) by type of alcoholic beverage, 2010



Alcohol per capita (15+) consumption (in litres of pure alcohol)

	Average 2003–2005	Average 2008–2010	Change
Recorded	8.4 [†]	6.3 [†]	↘
Unrecorded	0.6	0.5	→
Total	9.0	6.9	↘
Total males / females		10.1 / 3.9	
WHO Region of the Americas	9.2	8.4	

[†]Tourist consumption deducted when at least as many tourists as inhabitants.

Prevalence of heavy episodic drinking* (%), 2010

	Population	Drinkers only
Males (15+)	9.8	14.5
Females (15+)	1.3	2.9
Both sexes (15+)	5.4	9.8

*Consumed at least 60 grams or more of pure alcohol on at least one occasion in the past 30 days.

Total alcohol per capita (15+) consumption, drinkers only (in litres of pure alcohol), 2010

Males (15+)	14.9
Females (15+)	9.0
Both sexes (15+)	12.5

Abstainers (%), 2010

	Males	Females	Both sexes
Lifetime abstainers (15+)	14.2	34.2	24.5
Former drinkers* (15+)	18.3	22.4	20.4
Abstainers (15+), past 12 months	32.5	56.6	45.0

*Persons who used to drink alcoholic beverages but have not done so in the past 12 months.

Patterns of drinking score, 2010

LEAST RISKY < 1 2 3 4 5 > MOST RISKY

HEALTH CONSEQUENCES: MORTALITY AND MORBIDITY

Age-standardized death rates (ASDR) and alcohol-attributable fractions (AAF), 2012

	ASDR*		AAF (%)	
	17.2	4.3	49.0	45.4
Liver cirrhosis, males / females	21.2	9.9	4.9	1.7
Road traffic accidents, males / females	*Per 100 000 population (15+).			

*Per 100 000 population (15+).

Years of life lost (YLL) score*, 2012

LEAST No information available MOST

*Based on alcohol-attributable years of life lost.

Prevalence of alcohol use disorders and alcohol dependence (%), 2010*

	Alcohol use disorders**	Alcohol dependence
Males	8.1	3.9
Females	3.2	1.8
Both sexes	5.6	2.8
WHO Region of the Americas	6.0	3.4

*12-month prevalence estimates (15+).

**Including alcohol dependence and harmful use of alcohol.

POLICIES AND INTERVENTIONS

Written national policy (adopted/revised) / National action plan	Yes (1932/2006) / No	National maximum legal blood alcohol concentration (BAC) when driving a vehicle (general / young / professional), in %	0.08 / 0.08 / 0.08
Excise tax on beer / wine / spirits	Yes / Yes / Yes	Legally binding regulations on alcohol advertising / product placement	Yes / Yes
National legal minimum age for off-premise sales of alcoholic beverages (beer / wine / spirits)	18 / 18 / 18	Legally binding regulations on alcohol sponsorship / sales promotion	Yes / No
National legal minimum age for on-premise sales of alcoholic beverages (beer / wine / spirits)	18 / 18 / 18	Legally required health warning labels on alcohol advertisements / containers	No / No
Restrictions for on-/off-premise sales of alcoholic beverages: Hours, days / places, density	Yes, Yes / Yes, Yes	National government support for community action	Yes
Specific events / intoxicated persons / petrol stations	Yes / Yes / Yes	National monitoring system(s)	Yes