

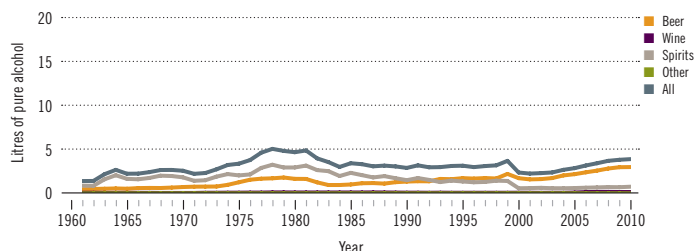
Bolivia (Plurinational State of)

Total population: 10 157 000 > Population aged 15 years and older (15+): 64% > Population in urban areas: 67% > Income group (World Bank): Lower middle income

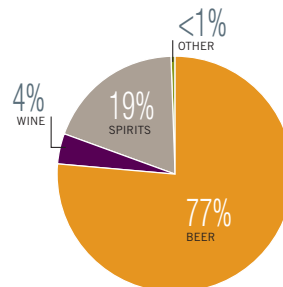
ALCOHOL CONSUMPTION: LEVELS AND PATTERNS

Recorded alcohol per capita (15+) consumption, 1961–2010

Data refer to litres of pure alcohol per capita (15+).



Recorded alcohol per capita (15+) consumption (in litres of pure alcohol) by type of alcoholic beverage, 2010



Alcohol per capita (15+) consumption (in litres of pure alcohol)

	Average 2003–2005	Average 2008–2010	Change
Recorded	2.6	3.8	↗
Unrecorded	2.5	2.1	↘
Total	5.1	5.9	↗
Total males / females		9.1 / 2.7	
WHO Region of the Americas	9.2	8.4	

Total alcohol per capita (15+) consumption, drinkers only (in litres of pure alcohol), 2010

Males (15+)	14.5
Females (15+)	6.6
Both sexes (15+)	11.3

Prevalence of heavy episodic drinking* (%), 2010

	Population	Drinkers only
Males (15+)	7.8	12.4
Females (15+)	0.7	1.7
Both sexes (15+)	4.2	8.1

*Consumed at least 60 grams or more of pure alcohol on at least one occasion in the past 30 days.

Abstainers (%), 2010

	Males	Females	Both sexes
Lifetime abstainers (15+)	16.4	38.0	27.3
Former drinkers* (15+)	21.2	20.7	21.0
Abstainers (15+), past 12 months	37.6	58.7	48.3

*Persons who used to drink alcoholic beverages but have not done so in the past 12 months.

Patterns of drinking score, 2010

LEAST RISKY < 1 2 3 4 5 > MOST RISKY

HEALTH CONSEQUENCES: MORTALITY AND MORBIDITY

Age-standardized death rates (ASDR) and alcohol-attributable fractions (AAF), 2012

	ASDR*		AAF (%)	
	64.5	36.2	47.8	54.1
Liver cirrhosis, males / females	37.9	12.0	7.7	2.1
Road traffic accidents, males / females				

*Per 100 000 population (15+).

Years of life lost (YLL) score*, 2012

LEAST < 1 2 3 4 5 > MOST

*Based on alcohol-attributable years of life lost.

Prevalence of alcohol use disorders and alcohol dependence (%), 2010*

	Alcohol use disorders**	Alcohol dependence
Males	8.1	3.9
Females	3.1	1.8
Both sexes	5.6	2.9
WHO Region of the Americas	6.0	3.4

*12-month prevalence estimates (15+).

**Including alcohol dependence and harmful use of alcohol.

POLICIES AND INTERVENTIONS

Written national policy (adopted/revised) / National action plan	No / —
Excise tax on beer / wine / spirits	Yes / Yes / Yes
National legal minimum age for off-premise sales of alcoholic beverages (beer / wine / spirits)	No / No / No
National legal minimum age for on-premise sales of alcoholic beverages (beer / wine / spirits)	No / No / No
Restrictions for on-/off-premise sales of alcoholic beverages: Hours, days / places, density Specific events / intoxicated persons / petrol stations	No, No / No, No No / No / No

National maximum legal blood alcohol concentration (BAC) when driving a vehicle (general / young / professional), in %	No / No / No (0.05 public transport)
Legally binding regulations on alcohol advertising / product placement	No / No
Legally binding regulations on alcohol sponsorship / sales promotion	No / No
Legally required health warning labels on alcohol advertisements / containers	No / No
National government support for community action	No
National monitoring system(s)	No