

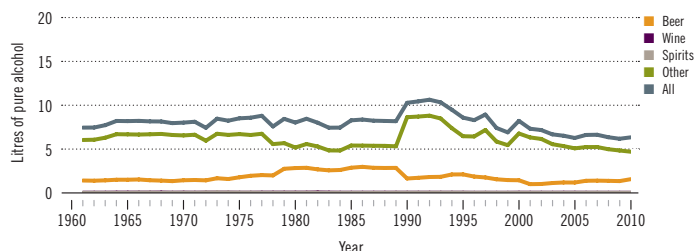
Burundi

Total population: 9 233 000 ► Population aged 15 years and older (15+): 56% ► Population in urban areas: 11% ► Income group (World Bank): Low income

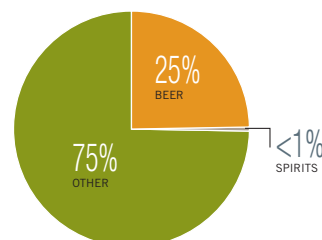
ALCOHOL CONSUMPTION: LEVELS AND PATTERNS

Recorded alcohol per capita (15+) consumption, 1961–2010

Data refer to litres of pure alcohol per capita (15+).



Recorded alcohol per capita (15+) consumption (in litres of pure alcohol) by type of alcoholic beverage, 2010



Alcohol per capita (15+) consumption (in litres of pure alcohol)

	Average 2003–2005	Average 2008–2010	Change
Recorded	6.5	6.3	→
Unrecorded	3.0	3.0	→
Total	9.5	9.3	→
Total males / females		13.9 / 4.8	
WHO African Region	6.2	6.0	

Total alcohol per capita (15+) consumption, drinkers only (in litres of pure alcohol), 2010

Males (15+)	26.5
Females (15+)	15.0
Both sexes (15+)	22.0

Abstainers (%), 2010

	Males	Females	Both sexes
Lifetime abstainers (15+)	30.9	58.5	44.9
Former drinkers* (15+)	16.6	9.4	12.9
Abstainers (15+), past 12 months	47.5	67.9	57.9

*Persons who used to drink alcoholic beverages but have not done so in the past 12 months.

Prevalence of heavy episodic drinking* (%), 2010

	Population	Drinkers only
Males (15+)	6.0	11.4
Females (15+)	0.1	0.3
Both sexes (15+)	3.0	7.1

*Consumed at least 60 grams or more of pure alcohol on at least one occasion in the past 30 days.

Patterns of drinking score, 2010

LEAST RISKY < 1 2 3 4 5 > MOST RISKY

HEALTH CONSEQUENCES: MORTALITY AND MORBIDITY

Age-standardized death rates (ASDR) and alcohol-attributable fractions (AAF), 2012

	ASDR*		AAF (%)	
	58.0	30.3	72.1	68.3
Liver cirrhosis, males / females	37.8	11.9	15.3	5.4
Road traffic accidents, males / females				

*Per 100 000 population (15+).

Prevalence of alcohol use disorders and alcohol dependence (%), 2010*

	Alcohol use disorders**	Alcohol dependence
Males	9.4	3.9
Females	1.9	0.9
Both sexes	5.5	2.4
WHO African Region	3.3	1.4

*12-month prevalence estimates (15+).

**Including alcohol dependence and harmful use of alcohol.

Years of life lost (YLL) score*, 2012

LEAST < 1 2 3 4 5 > MOST

*Based on alcohol-attributable years of life lost.

POLICIES AND INTERVENTIONS

Written national policy (adopted/revised) / National action plan	No / —
Excise tax on beer / wine / spirits	Yes / Yes / Yes
National legal minimum age for off-premise sales of alcoholic beverages (beer / wine / spirits)	No / No / No
National legal minimum age for on-premise sales of alcoholic beverages (beer / wine / spirits)	18 / 18 / 18
Restrictions for on-/off-premise sales of alcoholic beverages:	
Hours, days / places, density	Yes, No / No, No
Specific events / intoxicated persons / petrol stations	No / Yes / Yes

National maximum legal blood alcohol concentration (BAC) when driving a vehicle (general / young / professional), in %	No / No / No
Legally binding regulations on alcohol advertising / product placement	No / No
Legally binding regulations on alcohol sponsorship / sales promotion	No / No
Legally required health warning labels on alcohol advertisements / containers	No / No
National government support for community action	No
National monitoring system(s)	No