

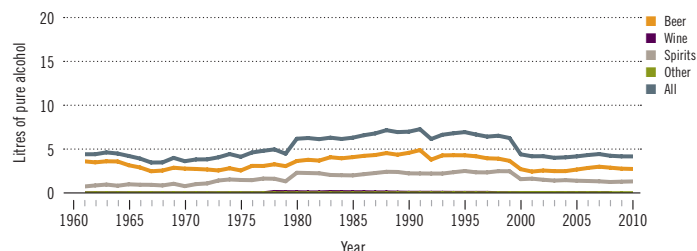
Colombia

Total population: 46 445 000 > Population aged 15 years and older (15+): 71% > Population in urban areas: 75% > Income group (World Bank): Upper middle income

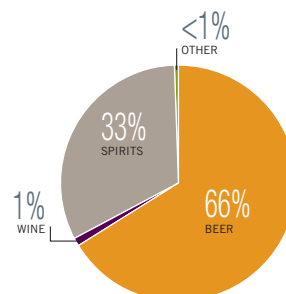
ALCOHOL CONSUMPTION: LEVELS AND PATTERNS

Recorded alcohol per capita (15+) consumption, 1961–2010

Data refer to litres of pure alcohol per capita (15+).



Recorded alcohol per capita (15+) consumption (in litres of pure alcohol) by type of alcoholic beverage, 2010



Alcohol per capita (15+) consumption (in litres of pure alcohol)

	Average 2003–2005	Average 2008–2010	Change
Recorded	4.2	4.2	→
Unrecorded	2.0	2.0	→
Total	6.2	6.2	→
Total males / females		9.1 / 3.5	
WHO Region of the Americas	9.2	8.4	

Total alcohol per capita (15+) consumption, drinkers only (in litres of pure alcohol), 2010

Males (15+)	15.2
Females (15+)	9.4
Both sexes (15+)	12.9

Prevalence of heavy episodic drinking* (%), 2010

	Population	Drinkers only
Males (15+)	8.3	13.8
Females (15+)	0.2	0.6
Both sexes (15+)	4.1	8.6

*Consumed at least 60 grams or more of pure alcohol on at least one occasion in the past 30 days.

Abstainers (%), 2010

	Males	Females	Both sexes
Lifetime abstainers (15+)	18.9	42.1	30.9
Former drinkers* (15+)	21.2	20.5	20.9
Abstainers (15+), past 12 months	40.1	62.6	51.7

*Persons who used to drink alcoholic beverages but have not done so in the past 12 months.

Patterns of drinking score, 2010

LEAST RISKY < 1 2 3 4 5 > MOST RISKY

HEALTH CONSEQUENCES: MORTALITY AND MORBIDITY

Age-standardized death rates (ASDR) and alcohol-attributable fractions (AAF), 2012

	ASDR*		AAF (%)	
Liver cirrhosis, males / females	9.0	5.4	56.0	54.2
Road traffic accidents, males / females	35.8	7.4	23.2	9.0

*Per 100 000 population (15+).

Prevalence of alcohol use disorders and alcohol dependence (%), 2010*

	Alcohol use disorders**	Alcohol dependence
Males	8.7	4.5
Females	3.3	1.9
Both sexes	5.9	3.2
WHO Region of the Americas	6.0	3.4

*12-month prevalence estimates (15+).

**Including alcohol dependence and harmful use of alcohol.

Years of life lost (YLL) score*, 2012

LEAST < 1 2 3 4 5 > MOST

*Based on alcohol-attributable years of life lost.

POLICIES AND INTERVENTIONS

Written national policy (adopted/revised) / National action plan	Yes(2007/—) / Yes
Excise tax on beer / wine / spirits	Yes / Yes / Yes
National legal minimum age for off-premise sales of alcoholic beverages (beer / wine / spirits)	18 / 18 / 18
National legal minimum age for on-premise sales of alcoholic beverages (beer / wine / spirits)	18 / 18 / 18
Restrictions on on-/off-premise sales of alcoholic beverages: Hours, days / places, density Specific events / intoxicated persons / petrol stations	No, No / Yes, No Yes / No / No

National maximum legal blood alcohol concentration (BAC) when driving a vehicle (general / young / professional), in %	0.04 / 0.04 / 0.04
Legally binding regulations on alcohol advertising / product placement	Yes / No
Legally binding regulations on alcohol sponsorship / sales promotion	No / No
Legally required health warning labels on alcohol advertisements / containers	Yes / Yes
National government support for community action	Yes
National monitoring system(s)	Yes