

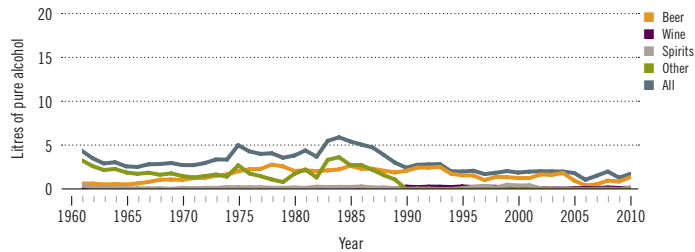
Congo

Total population: 4 112 000 ➤ Population aged 15 years and older (15+): 58% ➤ Population in urban areas: 62% ➤ Income group (World Bank): Lower middle income

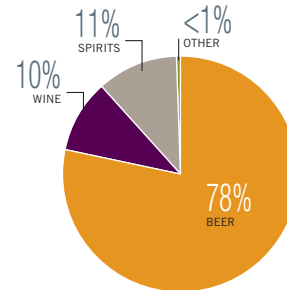
ALCOHOL CONSUMPTION: LEVELS AND PATTERNS

Recorded alcohol per capita (15+) consumption, 1961–2010

Data refer to litres of pure alcohol per capita (15+).



Recorded alcohol per capita (15+) consumption (in litres of pure alcohol) by type of alcoholic beverage, 2010



Alcohol per capita (15+) consumption (in litres of pure alcohol)

	Average 2003–2005	Average 2008–2010	Change
Recorded	2.0	1.7	↘
Unrecorded	2.2	2.2	→
Total	4.2	3.9	↘
Total males / females		6.2 / 1.6	
WHO African Region	6.2	6.0	

Total alcohol per capita (15+) consumption, drinkers only (in litres of pure alcohol), 2010

Males (15+)	14.7
Females (15+)	10.5
Both sexes (15+)	13.6

Abstainers (%), 2010

	Males	Females	Both sexes
Lifetime abstainers (15+)	48.9	75.0	62.0
Former drinkers* (15+)	9.0	9.6	9.3
Abstainers (15+), past 12 months	57.9	84.6	71.3

*Persons who used to drink alcoholic beverages but have not done so in the past 12 months.

Prevalence of heavy episodic drinking* (%), 2010

	Population	Drinkers only
Males (15+)	6.0	14.2
Females (15+)	0.4	2.7
Both sexes (15+)	3.2	11.1

*Consumed at least 60 grams or more of pure alcohol on at least one occasion in the past 30 days.

Patterns of drinking score, 2010

LEAST RISKY < 1 2 3 4 5 > MOST RISKY

HEALTH CONSEQUENCES: MORTALITY AND MORBIDITY

Age-standardized death rates (ASDR) and alcohol-attributable fractions (AAF), 2012

	ASDR*		AAF (%)	
	47.4	23.5	47.8	49.7
Liver cirrhosis, males / females	30.8	9.6	5.9	1.5
Road traffic accidents, males / females				

*Per 100 000 population (15+).

Prevalence of alcohol use disorders and alcohol dependence (%), 2010*

	Alcohol use disorders**	Alcohol dependence
Males	3.1	1.3
Females	0.4	0.2
Both sexes	1.7	0.7
WHO African Region	3.3	1.4

*12-month prevalence estimates (15+).

**Including alcohol dependence and harmful use of alcohol.

Years of life lost (YLL) score*, 2012

LEAST < 1 2 3 4 5 > MOST

*Based on alcohol-attributable years of life lost.

POLICIES AND INTERVENTIONS

Written national policy (adopted/revised) / National action plan	Yes (1917/1960) / No
Excise tax on beer / wine / spirits	Yes / Yes / Yes
National legal minimum age for off-premise sales of alcoholic beverages (beer / wine / spirits)	18 / 18 / 18
National legal minimum age for on-premise sales of alcoholic beverages (beer / wine / spirits)	16 / 16 / 16
Restrictions for on-/off-premise sales of alcoholic beverages:	
Hours, days / places, density	Yes, Yes / Yes, Yes
Specific events / intoxicated persons / petrol stations	No / No / Yes

National maximum legal blood alcohol concentration (BAC) when driving a vehicle (general / young / professional), in %	0.08 / 0.08 / 0.08
Legally binding regulations on alcohol advertising / product placement	No / No
Legally binding regulations on alcohol sponsorship / sales promotion	No / No
Legally required health warning labels on alcohol advertisements / containers	No / No
National government support for community action	No
National monitoring system(s)	Yes