

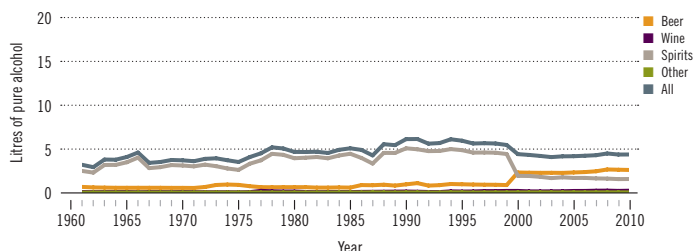
Costa Rica

Total population: 4 670 000 ► Population aged 15 years and older (15+): 75% ► Population in urban areas: 64% ► Income group (World Bank): Upper middle income

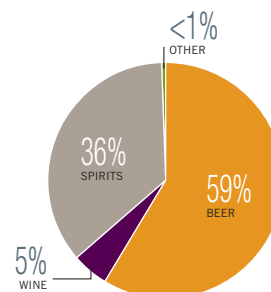
ALCOHOL CONSUMPTION: LEVELS AND PATTERNS

Recorded alcohol per capita (15+) consumption, 1961–2010

Data refer to litres of pure alcohol per capita (15+).



Recorded alcohol per capita (15+) consumption (in litres of pure alcohol) by type of alcoholic beverage, 2010



Alcohol per capita (15+) consumption (in litres of pure alcohol)

	Average 2003–2005	Average 2008–2010	Change
Recorded	4.1	4.4	→
Unrecorded	1.4	1.0	↘
Total	5.5	5.4	→
Total males / females		7.5 / 3.2	
WHO Region of the Americas	9.2	8.4	

Total alcohol per capita (15+) consumption, drinkers only (in litres of pure alcohol), 2010

Males (15+)	12.1
Females (15+)	7.8
Both sexes (15+)	10.5

Prevalence of heavy episodic drinking* (%), 2010

	Population	Drinkers only
Males (15+)	12.6	20.4
Females (15+)	2.4	6.0
Both sexes (15+)	7.6	14.8

*Consumed at least 60 grams or more of pure alcohol on at least one occasion in the past 30 days.

Abstainers (%), 2010

	Males	Females	Both sexes
Lifetime abstainers (15+)	16.8	38.8	27.6
Former drinkers* (15+)	21.2	20.7	21.0
Abstainers (15+), past 12 months	38.0	59.5	48.6

*Persons who used to drink alcoholic beverages but have not done so in the past 12 months.

Patterns of drinking score, 2010

LEAST RISKY < 1 2 3 4 5 > MOST RISKY

HEALTH CONSEQUENCES: MORTALITY AND MORBIDITY

Age-standardized death rates (ASDR) and alcohol-attributable fractions (AAF), 2012

	ASDR*		AAF (%)	
	14.8	5.0	46.0	53.7
Liver cirrhosis, males / females	27.5	5.6	32.0	13.2
Road traffic accidents, males / females				

*Per 100 000 population (15+).

Prevalence of alcohol use disorders and alcohol dependence (%), 2010*

	Alcohol use disorders**	Alcohol dependence
Males	8.7	4.4
Females	2.8	1.5
Both sexes	5.8	3.0
WHO Region of the Americas	6.0	3.4

*12-month prevalence estimates (15+).

**Including alcohol dependence and harmful use of alcohol.

Years of life lost (YLL) score*, 2012

LEAST < 1 2 3 4 5 > MOST

*Based on alcohol-attributable years of life lost.

POLICIES AND INTERVENTIONS

Written national policy (adopted/revised) / National action plan	No / —	National maximum legal blood alcohol concentration (BAC) when driving a vehicle (general / young / professional), in %	0.05 / 0.05 / 0.05
Excise tax on beer / wine / spirits	Yes / Yes / Yes	Legally binding regulations on alcohol advertising / product placement	Yes / Yes
National legal minimum age for off-premise sales of alcoholic beverages (beer / wine / spirits)	18 / 18 / 18	Legally binding regulations on alcohol sponsorship / sales promotion	No / No
National legal minimum age for on-premise sales of alcoholic beverages (beer / wine / spirits)	18 / 18 / 18	Legally required health warning labels on alcohol advertisements / containers	Yes / No
Restrictions for on-/off-premise sales of alcoholic beverages: Hours, days / places, density	Yes, Yes / Yes, Yes	National government support for community action	Yes
Specific events / intoxicated persons / petrol stations	Yes / Yes / Yes	National monitoring system(s)	Yes