

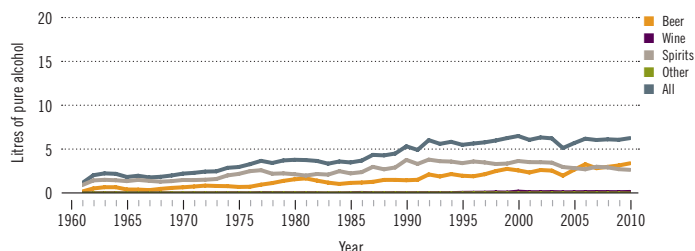
Dominican Republic

Total population: 10 017 000 > Population aged 15 years and older (15+): 69% > Population in urban areas: 69% > Income group (World Bank): Upper middle income

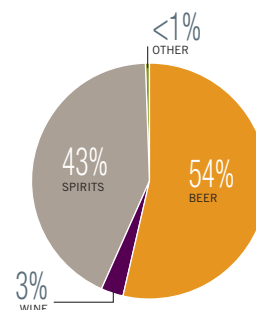
ALCOHOL CONSUMPTION: LEVELS AND PATTERNS

Recorded alcohol per capita (15+) consumption, 1961–2010

Data refer to litres of pure alcohol per capita (15+).



Recorded alcohol per capita (15+) consumption (in litres of pure alcohol) by type of alcoholic beverage, 2010



Alcohol per capita (15+) consumption (in litres of pure alcohol)

| | Average 2003–2005 | Average 2008–2010 | Change |
|----------------------------|-------------------|-------------------|--------|
| Recorded | 5.7 | 6.2 | ➔ |
| Unrecorded | 0.6 | 0.7 | ➔ |
| Total | 6.3 | 6.9 | ➔ |
| Total males / females | | 9.8 / 4.0 | |
| WHO Region of the Americas | 9.2 | 8.4 | |

Total alcohol per capita (15+) consumption, drinkers only (in litres of pure alcohol), 2010

| | |
|------------------|------|
| Males (15+) | 14.7 |
| Females (15+) | 9.1 |
| Both sexes (15+) | 12.4 |

Abstainers (%), 2010

| | Males | Females | Both sexes |
|----------------------------------|-------|---------|------------|
| Lifetime abstainers (15+) | 14.9 | 35.5 | 25.2 |
| Former drinkers* (15+) | 18.3 | 20.7 | 19.5 |
| Abstainers (15+), past 12 months | 33.2 | 56.2 | 44.8 |

*Persons who used to drink alcoholic beverages but have not done so in the past 12 months.

Prevalence of heavy episodic drinking* (%), 2010

| | Population | Drinkers only |
|------------------|------------|---------------|
| Males (15+) | 24.7 | 37.0 |
| Females (15+) | 8.2 | 18.6 |
| Both sexes (15+) | 16.4 | 29.6 |

*Consumed at least 60 grams or more of pure alcohol on at least one occasion in the past 30 days.

Patterns of drinking score, 2010

LEAST RISKY < 1 2 3 4 5 > MOST RISKY

HEALTH CONSEQUENCES: MORTALITY AND MORBIDITY

Age-standardized death rates (ASDR) and alcohol-attributable fractions (AAF), 2012

| | ASDR* | | AAF (%) | |
|---|-------|------|---------|------|
| | 19.7 | 16.2 | 53.1 | 48.0 |
| Liver cirrhosis, males / females | 19.7 | 16.2 | 53.1 | 48.0 |
| Road traffic accidents, males / females | 76.1 | 23.0 | 10.0 | 3.9 |

*Per 100 000 population (15+).

Prevalence of alcohol use disorders and alcohol dependence (%), 2010*

| | Alcohol use disorders** | Alcohol dependence |
|----------------------------|-------------------------|--------------------|
| Males | 8.2 | 3.9 |
| Females | 3.2 | 1.8 |
| Both sexes | 5.7 | 2.8 |
| WHO Region of the Americas | 6.0 | 3.4 |

*12-month prevalence estimates (15+).

**Including alcohol dependence and harmful use of alcohol.

Years of life lost (YLL) score*, 2012

LEAST < 1 2 3 4 5 > MOST

*Based on alcohol-attributable years of life lost.

POLICIES AND INTERVENTIONS

| | |
|--|----------------------------------|
| Written national policy (adopted/revised) / National action plan | No / — |
| Excise tax on beer / wine / spirits | Yes / Yes / Yes |
| National legal minimum age for off-premise sales of alcoholic beverages (beer / wine / spirits) | 18 / 18 / 18 |
| National legal minimum age for on-premise sales of alcoholic beverages (beer / wine / spirits) | 18 / 18 / 18 |
| Restrictions for on-/off-premise sales of alcoholic beverages: Hours, days / places, density Specific events / intoxicated persons / petrol stations | Yes, No / No, No No / No / No |

| | |
|--|--------------------|
| National maximum legal blood alcohol concentration (BAC) when driving a vehicle (general / young / professional), in % | 0.05 / 0.03 / 0.03 |
| Legally binding regulations on alcohol advertising / product placement | No / No |
| Legally binding regulations on alcohol sponsorship / sales promotion | No / No |
| Legally required health warning labels on alcohol advertisements / containers | Yes / Yes |
| National government support for community action | Yes |
| National monitoring system(s) | No |