

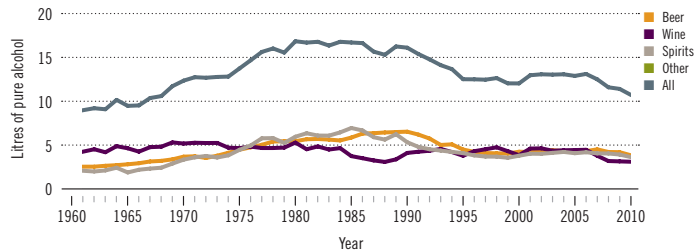
# Hungary

Total population: 10 015 000 > Population aged 15 years and older (15+): 85% > Population in urban areas: 68% > Income group (World Bank): High income

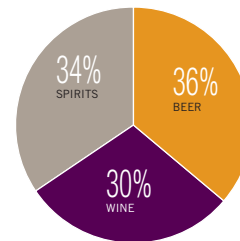
## ALCOHOL CONSUMPTION: LEVELS AND PATTERNS

Recorded alcohol per capita (15+) consumption, 1961–2010

Data refer to litres of pure alcohol per capita (15+).



Recorded alcohol per capita (15+) consumption (in litres of pure alcohol) by type of alcoholic beverage, 2010



Alcohol per capita (15+) consumption (in litres of pure alcohol)

	Average 2003–2005	Average 2008–2010	Change
Recorded	13.1	11.3	↘
Unrecorded	4.0	2.0	↘
<b>Total</b>	<b>17.1</b>	<b>13.3</b>	↘
Total males / females		20.4 / 7.1	
WHO European Region	11.9	10.9	

Total alcohol per capita (15+) consumption, drinkers only (in litres of pure alcohol), 2010

Males (15+)	23.8
Females (15+)	9.1
Both sexes (15+)	16.3

Prevalence of heavy episodic drinking\* (%), 2010

	Population	Drinkers only
Males (15+)	44.5	52.1
Females (15+)	10.3	13.2
Both sexes (15+)	26.3	32.3

\*Consumed at least 60 grams or more of pure alcohol on at least one occasion in the past 30 days.

Abstainers (%), 2010

	Males	Females	Both sexes
Lifetime abstainers (15+)	3.6	9.4	6.7
Former drinkers* (15+)	11.0	12.8	12.0
Abstainers (15+), past 12 months	14.6	22.2	18.6

\*Persons who used to drink alcoholic beverages but have not done so in the past 12 months.

Patterns of drinking score, 2010

LEAST RISKY < 1 2 3 4 5 > MOST RISKY

## HEALTH CONSEQUENCES: MORTALITY AND MORBIDITY

Age-standardized death rates (ASDR) and alcohol-attributable fractions (AAF), 2012

	ASDR*		AAF (%)	
Liver cirrhosis, males / females	57.0	16.8	76.9	66.7
Road traffic accidents, males / females	12.7	3.6	32.8	11.2

\*Per 100 000 population (15+).

Years of life lost (YLL) score\*, 2012

LEAST < 1 2 3 4 5 > MOST

\*Based on alcohol-attributable years of life lost.

Prevalence of alcohol use disorders and alcohol dependence (%), 2010\*

	Alcohol use disorders**	Alcohol dependence
Males	31.0	16.5
Females	6.0	3.2
Both sexes	17.7	9.4
WHO European Region	7.5	4.0

\*12-month prevalence estimates (15+).

\*\*Including alcohol dependence and harmful use of alcohol.

## POLICIES AND INTERVENTIONS

Written national policy (adopted/revised) / National action plan	No / —
Excise tax on beer / wine / spirits	Yes / No / Yes
National legal minimum age for off-premise sales of alcoholic beverages (beer / wine / spirits)	18 / 18 / 18
National legal minimum age for on-premise sales of alcoholic beverages (beer / wine / spirits)	18 / 18 / 18
Restrictions on on-/off-premise sales of alcoholic beverages: Hours, days / places, density Specific events / intoxicated persons / petrol stations	No, No / Yes, No Yes / Yes / No

National maximum legal blood alcohol concentration (BAC) when driving a vehicle (general / young / professional), in %	Zero tolerance
Legally binding regulations on alcohol advertising / product placement	Yes / Yes
Legally binding regulations on alcohol sponsorship / sales promotion	No / No
Legally required health warning labels on alcohol advertisements / containers	No / No
National government support for community action	Yes
National monitoring system(s)	Yes