

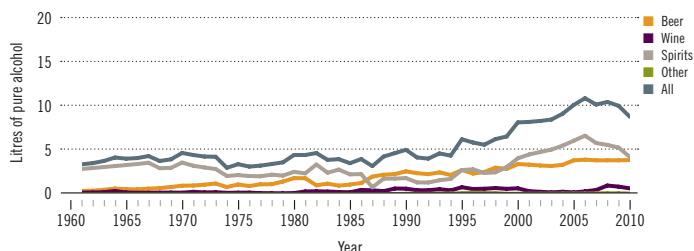
Saint Kitts and Nevis

Total population: 52 000 ▶ Population aged 15 years and older (15+): 73% ▶ Population in urban areas: 32% ▶ Income group (World Bank): Upper middle income

ALCOHOL CONSUMPTION: LEVELS AND PATTERNS

Recorded alcohol per capita (15+) consumption, 1961–2010

Data refer to litres of pure alcohol per capita (15+).



Alcohol per capita (15+) consumption (in litres of pure alcohol)

	Average 2003–2005	Average 2008–2010	Change
Recorded	8.8 [†]	7.7 [†]	↘
Unrecorded	0.5	0.5	→
Total	9.3	8.2	↘
Total males / females		11.8 / 4.7	
WHO Region of the Americas	9.2	8.4	

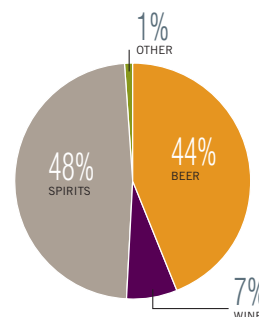
[†]Tourist consumption deducted when at least as many tourists as inhabitants.

Prevalence of heavy episodic drinking* (%), 2010

	Population	Drinkers only
Males (15+)	33.3	61.6
Females (15+)	10.4	33.1
Both sexes (15+)	21.6	50.9

*Consumed at least 60 grams or more of pure alcohol on at least one occasion in the past 30 days.

Recorded alcohol per capita (15+) consumption (in litres of pure alcohol) by type of alcoholic beverage, 2010



Total alcohol per capita (15+) consumption, drinkers only (in litres of pure alcohol), 2010

Males (15+)	21.9
Females (15+)	15.0
Both sexes (15+)	19.3

Abstainers (%), 2010

	Males	Females	Both sexes
Lifetime abstainers (15+)	22.8	48.2	35.7
Former drinkers* (15+)	23.2	20.3	21.7
Abstainers (15+), past 12 months	46.0	68.5	57.5

*Persons who used to drink alcoholic beverages but have not done so in the past 12 months.

Patterns of drinking score, 2010

LEAST RISKY < 1 2 3 4 5 > MOST RISKY

HEALTH CONSEQUENCES: MORTALITY AND MORBIDITY

Age-standardized death rates (ASDR) and alcohol-attributable fractions (AAF), 2012

	ASDR*		AAF (%)	
	—	—	—	—
Liver cirrhosis, males / females	—	—	—	—
Road traffic accidents, males / females	—	—	—	—

*Per 100 000 population (15+).

Prevalence of alcohol use disorders and alcohol dependence (%), 2010*

	Alcohol use disorders**	Alcohol dependence
Males	8.0	3.8
Females	3.1	1.8
Both sexes	5.5	2.8
WHO Region of the Americas	6.0	3.4

*12-month prevalence estimates (15+).

**Including alcohol dependence and harmful use of alcohol.

Years of life lost (YLL) score*, 2012

LEAST No information available MOST

*Based on alcohol-attributable years of life lost.

POLICIES AND INTERVENTIONS

Written national policy (adopted/revised) / National action plan	No / —	National maximum legal blood alcohol concentration (BAC) when driving a vehicle (general / young / professional), in %	0.08 / 0.08 / 0.08
Excise tax on beer / wine / spirits	Yes / Yes / Yes	Legally binding regulations on alcohol advertising / product placement	No / No
National legal minimum age for off-premise sales of alcoholic beverages (beer / wine / spirits)	18 / 18 / 18	Legally binding regulations on alcohol sponsorship / sales promotion	No / No
National legal minimum age for on-premise sales of alcoholic beverages (beer / wine / spirits)	18 / 18 / 18	Legally required health warning labels on alcohol advertisements / containers	No / No
Restrictions for on-/off-premise sales of alcoholic beverages: Hours, days / places, density	Yes, Yes / Yes, Yes	National government support for community action	Yes
Specific events / intoxicated persons / petrol stations	Yes / Yes / Yes	National monitoring system(s)	No